

PARTITION NOTES

NOTE: UNLESS OTHERWISE NOTED, ALL WALL FRAMING SHALL BE 20 GAUGE STUDS MINIMUM AND ALL GNB SHALL BE 5/8" TYPE X IN ALL LOCATIONS.

- ALL STUDS SHALL BE 'CEE' STUDS WITH FLANGE STIFFENERS.
- THE MATERIALS AND DETAILS SHOWN ARE FOR TYPICAL INSTALLATIONS WHERE THE STUD MANUFACTURER'S RECOMMENDATIONS OR LOCAL ORDINANCES ARE MORE RESTRICTIVE, THEY SHALL APPLY.
- TYPICAL FASTENER:
 - STEEL STUDS TO STEEL STUDS OR TRACKS: # 8-10 X 1/2" TEK'S /2" WITH PHIL PAN HEAD FOR 25 GA. OR 20 GA. #10 - 16 X 9/16" TEK'S/3" WITH PHIL PAN HEAD FOR INTERCONNECTION OF 18 GA. OR 16 GA.
 - STEEL STUDS OR TRACKS TO WOOD FURLINS, GIRLERS & BEAMS: #14-10 X 1 1/2" H.V.H. TYPE 'S' METAL -TO- WOOD TEK'S.
 - STEEL STUDS OR TRACKS TO STRUCTURAL STEEL (TUBE STEEL, WIDE FLANGE COLUMNS, BEAMS, GIRLERS, ETC.): TEK'S/3 OR TEK'S/4 WITH PHIL PAN HEAD FOR INTERCONNECTION OF 18 GA. OR 16 GA.
 - PLYWOOD TO STEEL STUDS: #10 - 24 X 3/4" TEK'S/3 (PLYMETAL TEK'S) WITH THIN WAFER HEAD.
 - GYP. BOARD TO STEEL STUDS: #1 X 1 1/4" HI-LO TYPE 'S' BUGLE HEAD SCREWS FOR 3/8" TO 5/8" GYP. BOARD TO 25 GAUGE OR 20 GAUGE STUDS. #6 X 1 1/4" TYPE 5-12 BUGLE HEAD SCREWS FOR 3/8" TO 5/8" TO 18 GA. OR 16 GA. STUDS OR TRACKS.
- 'ALIGN' MEANS SIMILAR COMPONENTS OF CONSTRUCTION, E.G., WALLS, JAMBS, ETC. SHALL ALIGN ACROSS VOIDS AND JOINTS.
- PARTITIONS SHALL BE CONTINUOUS OVER DOORS SAME AS ADJACENT WALLS (UNLESS NOTED OTHERWISE) WHERE DRYWALL CONTIGUES ABOVE CEILING LEVEL AND ABOVE THE CEILING LEVEL UP TO THE STRUCTURE ABOVE. ALL GYPSUM BOARD RETURNS SHALL HAVE METAL CORNER BEADS MINIMUM FLOOR TO CEILING. ALL PENETRATIONS IN DRYWALL CONSTRUCTION ABOVE FINISHED CEILING AND AS NOTED ELSEWHERE SHALL BE EFFECTIVELY SEALED TO PREVENT SOUND LEAKAGE AND FIRE STOP CAULKED AT U.L. RATED PARTITIONS. ALL DRY-WALL JOINTS ABOVE FINISHED CEILING SHALL BE "FIRE TAPED" ALL MECHANICAL CHASES AND OTHER NOTED CHASES ARE TO EXTEND UP TO THE UNDERSIDE OF THE DECK STRUCTURE ABOVE. ALL PLUMBING CHASES UNLESS OTHERWISE NOTED SHALL EXTEND ABOVE THE HIGHEST ADJOINING CEILING AND BE BRACED TO STRUCTURE. ALL VERTICAL DIMENSIONS SHOWN ARE TO THE TOP OF THE SLAB, UNLESS NOTED OTHERWISE.
- DRYWALL CONTROL JOINTS ARE TO BE INSTALLED AT MINIMUM 30'-0" O.C. AT PARTITIONS AND ELSEWHERE AS NOTED. COORDINATE LOCATIONS W/ THE ARCHITECT.
- ALL CONSTRUCTION DESIGNATED TO BE SUPPORTED BY ROOF STRUCTURE SHALL BE SUPPORTED BY TOP CHORD OF STRUCTURAL JOISTS AND NOT FROM THE METAL DECK.
- ALL TENANT FRAMING SHALL BE METAL STUDS.
- ALL WOOD REFERRED TO IN SPECIFICATIONS, INCLUDING PLYWOOD AND WOOD BLOCKING IS TO BE FIRE RETARDANT TREATED.
- INSTALL 5/8" REINFORCED CEMENT UNDERLAYMENT BOARD BEHIND ALL TILE ON WALLS - REFER PLANS FOR LOCATIONS.
- RUNNERS TO BE SET IN BED OF ACOUSTIC SEALANT AT ALL AREAS. CONTINUOUS BEAD UNDER RUNNER, AND SEAL EACH SIDE AT WALL/FLOOR.
- CONTRACTOR TO PROVIDE SOLID, CONTINUOUS, FIRE RATED WOOD BLOCKING FOR ALL MILLWORK, ACCESSORIES AND OTHER MISCELLANEOUS ASSEMBLIES REQUIRING BLOCKING

METAL STUD SCHEDULE

SIZE	GA.	TYPE	16' O.C.		24' O.C.
			MAX. UNSUPPORTED HEIGHT		NOTE 1, 2, 3
2 1/2"	25	ST	UP TO	12'-6"	10'-4"
	22	ST	" "	13'-0"	11'-6"
	20	ST	" "	13'-10"	12'-0"
3 5/8"	25	ST	UP TO	16'-0"	13'-6"
	22	ST	" "	17'-3"	15'-0"
	20	ST	" "	17'-11"	15'-11"
6"	20	SJ	" "	18'-6"	16'-4"
	16	SJ	" "	19'-3"	
	16	SJ	" "	20'-0"	
6"	14	SJ	" "	22'-0"	
	22	ST	UP TO	25'-3"	22'-0"
	20	ST	" "	26'-11"	22'-10"
6"	20	SJ	" "	28'-0"	23'-8"
	18	SJ	" "	28'-0"	
	16	SJ	" "	30'-0"	
6"	14	SJ	" "	32'-0"	

- BASED ON INTERIOR NON-BEARING PARTITIONS WITH (1) LAYER OF GYP. BD. EA. SIDE. USE GAUGE, TYPE AS SCHEDULED UNLESS NOTED OTHERWISE ON DWGS.
- RUNNER TRACK GAUGE TO MATCH STUD.
- MOISTURE RESISTANT GNB TO BE USED IN JANITORS CLOSET AND RESTROOMS.

ACCESSIBLE FIXTURES AND ACCESSORIES MOUNTING SCHEDULE:

MK	ITEM	ACCESSIBLE DIMENSIONS REQUIRED
A	LAVATORIES - HEIGHT TO BOTTOM OF APRON	29" MIN
B	LAVATORIES - HEIGHT TO TOP OF RIM	34" MAX.
C	LAVATORIES - DEPTH FROM FINISHED WALL	17" MIN
D	URINAL - HEIGHT TO TOP OF RIM	17" MAX.
E	URINAL - DEPTH FROM FINISHED WALL TO OUTER EDGE OF ELONGATED RIM	14" MIN.
F	GRAB BARS - HEIGHT TO TOP OF BAR	33" - 36"
G	WATER CLOSET - HEIGHT TO TOP OF SEAT	17" - 19"
H	WATER CLOSET - HEIGHT TO FLUSH CONTROLS	44" MAX.
J	MIRROR - HEIGHT MAXIMUM TO BOTTOM EDGE OF REFLECTING SURFACE	40" MAX.
K	CONTROLS & DISPENSERS: (TELEPHONES INCLUDED) MAXIMUM TO CENTER LINE OF CONTROL DEVICE - FRONT APPROACH SIDE APPROACH	48" MAX. 54" MAX.
L	DRINKING FOUNTAIN - HEIGHT TO TOP OF SPOUT	36" MAX.
M	DRINKING FOUNTAIN - HEIGHT TO BOTTOM OF APRON	27" MIN.
N	DRINKING FOUNTAIN - DEPTH FROM FINISHED WALL	17" MIN.
P	PAPER TOWEL DISPENSER/DRYER - HT TO OPENING	48" MAX.
Q	TOILET PAPER DISPENSER - HT TO DISPENSER OPENING	15" MIN.
R	TOILET PAPER DISPENSER - DEPTH FROM WATER CLOSET	7" - 9"
S	COAT HOOK	54" MAX.
T	WATER CLOSET - CLEAR SPACE (WALL MTD)	56" MIN.
U	WATER CLOSET - FROM ADJACENT WALL TO C	18"
V	WATER CLOSET - CLEAR SPACE FROM ADJ. WALL	60" MIN.
W	LAVATORIES - CLEAR SPACE FROM C	15" MIN.
X	36" GRAB BAR - LOCATED FROM ADJACENT WALL	6" MAX.
Y	42" GRAB BAR - LOCATED FROM REAR WALL	12" MAX.
Z	18" VERTICAL GRAB BAR - LOCATED FROM ADJ. WALL	39"-41"
AA	18" VERTICAL GRAB BAR - LOCATED FROM FLOOR	39"-41"

	5'	2'	5'	6'	9'	11'
MAX. REACH DEPTH	5'	2'	5'	6'	9'	11'
MAX. REACH HEIGHT	48"	46"	42"	40"	36"	34"

NOTE: NEW DEMISING WALL CONSTRUCTED BY LANDLORD. 3 5/8" METAL STUDS AT 16' O.C. WITH 5/8" TYPE X GNB AT ADJACENT TENANT SIDE OF WALL ONLY - 6' O.C. TO INSTALL 5/8" TYPE X GNB AT BANK SIDE OF WALL TO UNDERSIDE OF BULKHEAD/DECK AND PROVIDE ACOUSTICAL INSULATION BATTS AT WALL CAVITY.

3 INTERIOR PARTITION: 3 5/8" METAL STUDS AT 16' O.C. WITH 5/8" TYPE X GNB ONE SIDE TO 6' ABOVE FINISH CEILING - INSULATE WALL FOR SOUND - ALLOW FOR DEFLECTION AT HEAD

NOTE: AT INTERIOR SIDE OF RESTROOM WALLS, PROVIDE 3/8" MOISTURE-RESISTANT TREATED GNB

2 INTERIOR PARTITION: 6" METAL STUDS AT 16' O.C. WITH 5/8" TYPE X GNB EA. SIDE TO 6' ABOVE FINISH CEILING - INSULATE WALL FOR SOUND - ALLOW FOR DEFLECTION AT HEAD

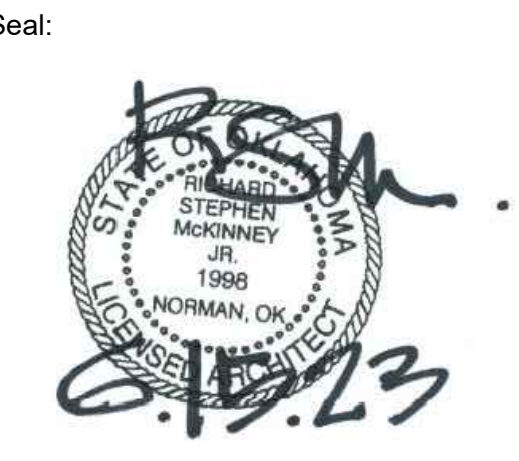
NOTE: AT INTERIOR SIDE OF RESTROOM WALLS, PROVIDE 3/8" MOISTURE-RESISTANT TREATED GNB

1 INTERIOR PARTITION: 3 5/8" METAL STUDS AT 16' O.C. WITH 5/8" TYPE X GNB EA. SIDE TO 6' ABOVE FINISH CEILING - INSULATE WALL FOR SOUND - ALLOW FOR DEFLECTION AT HEAD

NOTE: AT INTERIOR SIDE OF RESTROOM WALLS, PROVIDE 3/8" MOISTURE-RESISTANT TREATED GNB



3600 West Main
Suite 200
Norman, Oklahoma 73072
405.360.1400 p
405.364.8287 f
tmparch.com



Project:
Vision Bank
3600 West Main, Suite 100
Norman, Oklahoma 73072

Issue Date:
06.15.2023 - ISSUED FOR BIDDING

Revisions:
07.03.23 ADDENDUM #01

Project Number:
CM093523

Sheet Title:
PARTITION TYPES, TYPICAL DETAILS, FIXTURE MOUNTING SCHEDULE

Sheet Number:

03 NON-RATED PARTITION HEAD
SCALE: N.T.S.

02 LATERAL BRACING DETAIL
SCALE: N.T.S.

01 PARTITION TYPES
SCALE: N.T.S.

A0.1

GENERAL DEMOLITION NOTES

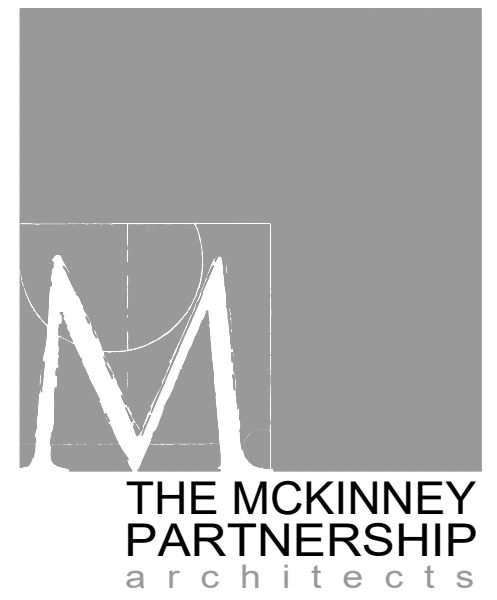
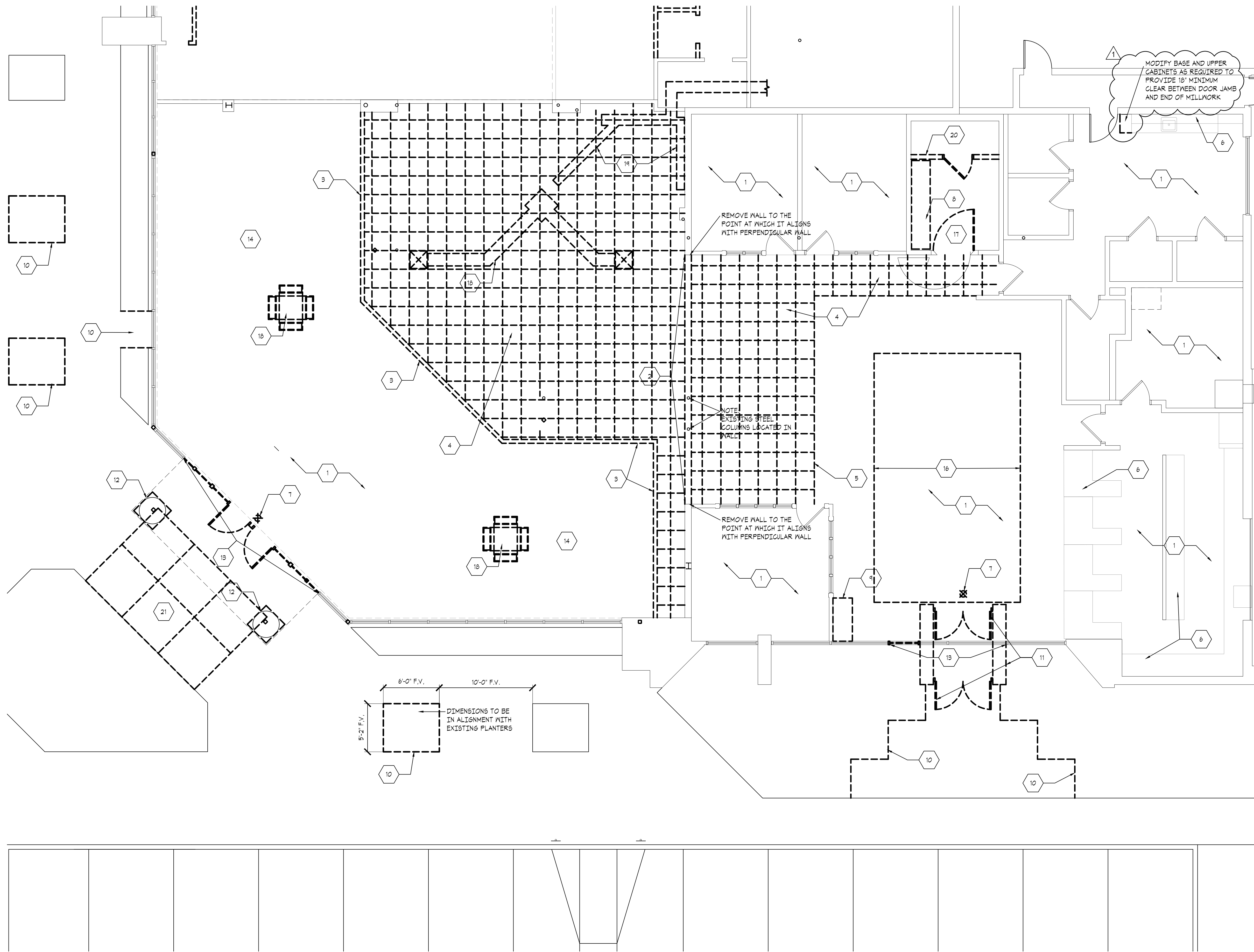
1. THE SCOPE OF THE WORK INCLUDES ALL INTERIOR ELEMENTS NECESSARY TO ACCOMMODATE THE NEW WORK. THIS INCLUDES, BUT IS NOT LIMITED TO, ALL INDICATED NON-LOAD BEARING INTERIOR WALLS, DOORS, CEILING AND FLOOR FINISHES DOWN TO A CLEAN AND LEVEL WORKING SURFACE. ALL EXISTING CONSTRUCTION TO REMAIN U.N.O.
2. THE DEMO CONTRACTOR SHALL VERIFY ALL FIELD CONDITIONS AND NOTIFY GENERAL CONTRACTOR OF ANY DISCREPANCIES PRIOR TO COMMENCEMENT OF THE WORK.
3. DURING THE DEMOLITION PHASE THE DEMO CONTRACTOR SHALL SUPPORT ALL EXISTING STRUCTURES AS REQUIRED TO MAINTAIN A SAFE WORKING ENVIRONMENT. ANY DAMAGE CAUSED BY THE DEMOLITION PROCESS WILL BE CORRECTED BY THE DEMO CONTRACTOR AT NO COST TO TENANT.
4. IF THE DEMOLITION PROCESS RESULTS IN AN UNSAFE WORKING ENVIRONMENT, STOP WORK IMMEDIATELY AND NOTIFY THE APPROPRIATE AUTHORITY, GENERAL CONTRACTOR AND ARCHITECT PRIOR TO PROCEEDING.
5. PROVIDE ALL LIFE SAFETY SYSTEMS INCLUDING, BUT NOT LIMITED TO, TEMPORARY LIGHTING BARRICADES, GUARD RAILS AND VENTILATION SYSTEMS AS REQUIRED BY LOCAL, STATE AND FEDERAL JURISDICTIONS.
6. DEMO CONTRACTOR SHALL ARRANGE TO IMMEDIATELY REMOVE AND LEGALLY DISPOSE OF ALL DEMOLITION MATERIALS.
7. PROCEED WITH DEMOLITION IN ACCORDANCE WITH ALL APPLICABLE CODES AND REGULATIONS.
8. COORDINATE WITH LANDLORD ON RUBBISH REMOVAL PROCEDURES, LOCATION OF TRASH DUMPSTERS TIME SCHEDULES, ETC. DISPOSE OF ALL RUBBISH IN A MANNER COMPLIANT WITH ALL LAWS, REGULATIONS, ETC.
9. PRIOR TO THE START OF ANY NEW CONSTRUCTION, CLEAN THE SITE OF ALL DEMOLITION DEBRIS. DEMO CONTRACTOR SHALL ASSURE THAT THE DEMOLITION WORK IS COMPLETE TO THE POINT WHERE NO ADDITIONAL DEMOLITION SHALL BE REQUIRED.
10. CONSULT WITH GENERAL CONTRACTOR PRIOR TO THE START OF DEMOLITION TO DETERMINE THE SCOPE OF ALL MATERIALS, FINISHES AND SYSTEMS THAT ARE TO BE REUSED.
11. ALL UTILITIES TO REMAIN U.N.O.
12. COORDINATE WITH LANDLORD ON DEMOLITION TIME RESTRICTIONS.
13. REFER MECHANICAL, ELECTRICAL, AND PLUMBING DRAWINGS FOR ADDITIONAL DEMOLITION ITEMS.

DEMOLITION KEY NOTES:

- 1 EXISTING FLOORING MATERIAL TO BE REMOVED THROUGHOUT.
- 2 REMOVE PORTION OF EXISTING WALL.
- 3 REMOVE EXISTING BULKHEAD FRAMING, FINISH AND INSULATION.
- 4 REMOVE CEILING GRID, TILE, HVAC COMPONENTS, SPEAKERS, LIGHT FIXTURES, INSULATION, ETC.
- 5 TEMPORARILY BRACE & PROTECT EXISTING FURREDOWN ABOVE TO REMAIN. REFER TO REFLECTED CEILING PLAN.
- 6 PRESERVE AND PROTECT EXISTING MILLWORK TO BE REFURBISHED.
- 7 REMOVE EXIT SIGN.
- 8 REMOVE SAFE DEPOSIT BOXES AND RETURN TO OWNER.
- 9 REMOVE COFFEE BAR MILLWORK AND CAP WATER SUPPLY LINE.
- 10 REMOVE CONCRETE PAVING FROM EXISTING PANELS IN SIDEWALK FOR NEW PLANTING AREAS.
- 11 REMOVE MASONRY WALLS AND ALUMINUM/GLASS DOORS.
- 12 REMOVE METAL COLUMN COVER.
- 13 REMOVE SECTION OF ALUMINUM STOREFRONT GLASS AND ENTRY DOORS.
- 14 REMOVE SUSPENDED FLUORESCENT AND TRACK LIGHT FIXTURES.
- 15 REMOVE EXISTING CEILING TILE, CEILING GRID AND LIGHT FIXTURES TO REMAIN.
- 16 REMOVE TILE AND LIGHT FIXTURES ONLY AT THIS CEILING AREA. GRID, DIFFUSERS, ETC. TO REMAIN.
- 17 REMOVE ALUMINUM GATE AND RETURN TO OWNER.
- 18 REMOVE EXISTING HVAC DUCTWORK, PLENUM AND CEILING MOUNTED DIFFUSERS.
- 19 REMOVE CONCRETE FLOOR SLAB AS REQUIRED FOR CONNECTION OF NEW PLUMBING FIXTURES TO LANDLORD'S SANITARY SEWER LINE.
- 20 REMOVE WALL, DOOR AND TRIM.
- 21 REMOVE DAMAGED CONCRETE PANELS IN SIDEWALK TO BE REPLACED WITH NEW (6 TOTAL).

WALL LEGEND

- EXISTING WALL CONSTRUCTION TO REMAIN
- - - EXISTING CONSTRUCTION TO BE DEMOLISHED



3600 West Main
Suite 200
Norman, Oklahoma
73072
405.360.1400 p
405.364.8287 f
tmparch.com

Seal:



Project:

Vision Bank
3600 West Main, Suite 100
Norman, Oklahoma 73072

Issue Date:

06.15.2023 - ISSUED FOR BIDDING

Revisions:

▲ 07.03.23 ADDENDUM #01

Project Number:

CM093523

Sheet Title:

DEMOLITION PLAN

Sheet Number:

D1.0

01 DEMOLITION PLAN
SCALE: 3/16" = 1'-0"

Seal:



Project:

Vision Bank
3600 West Main, Suite 100
Norman, Oklahoma 73072

Issue Date:
06.15.2023 - ISSUED FOR BIDDING

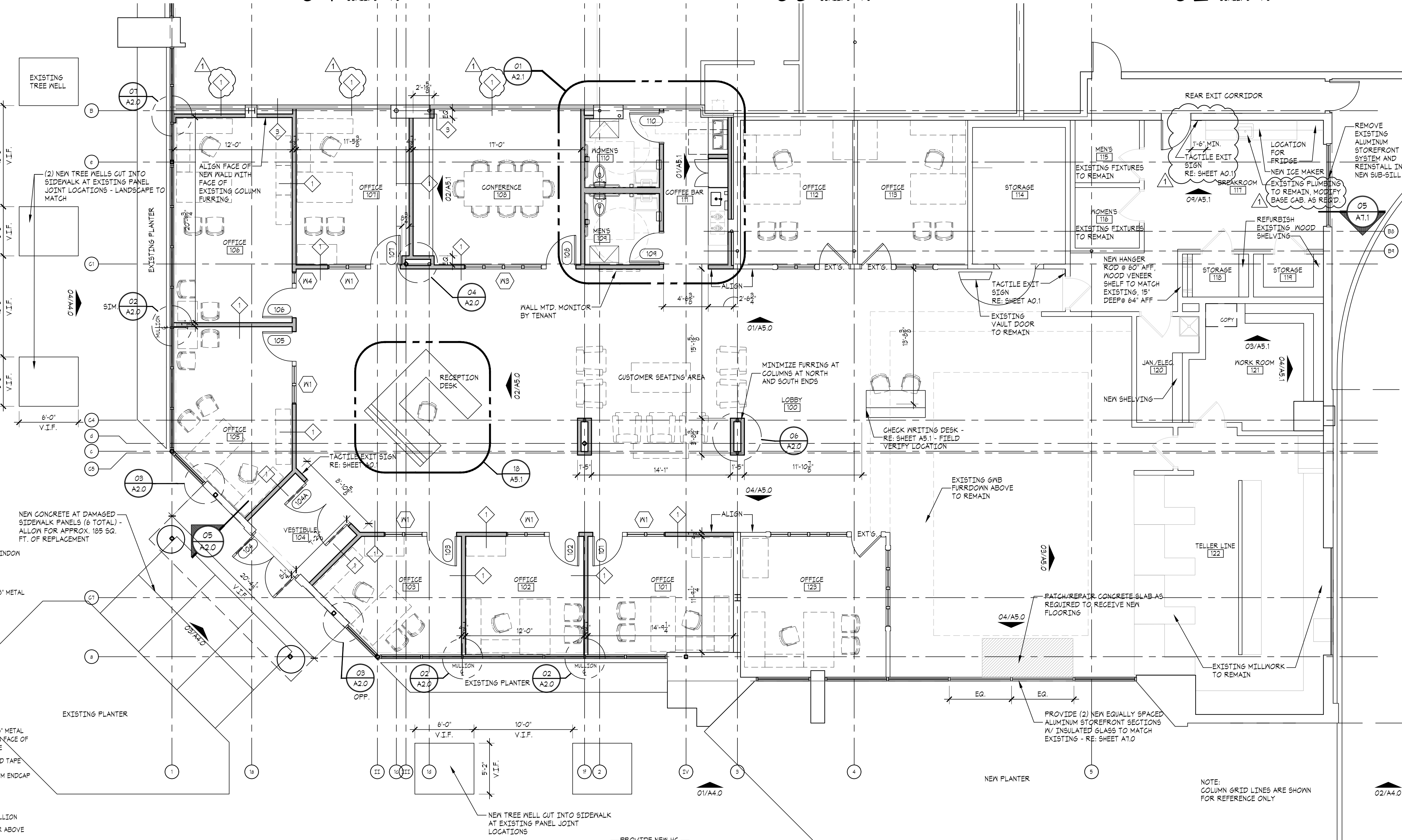
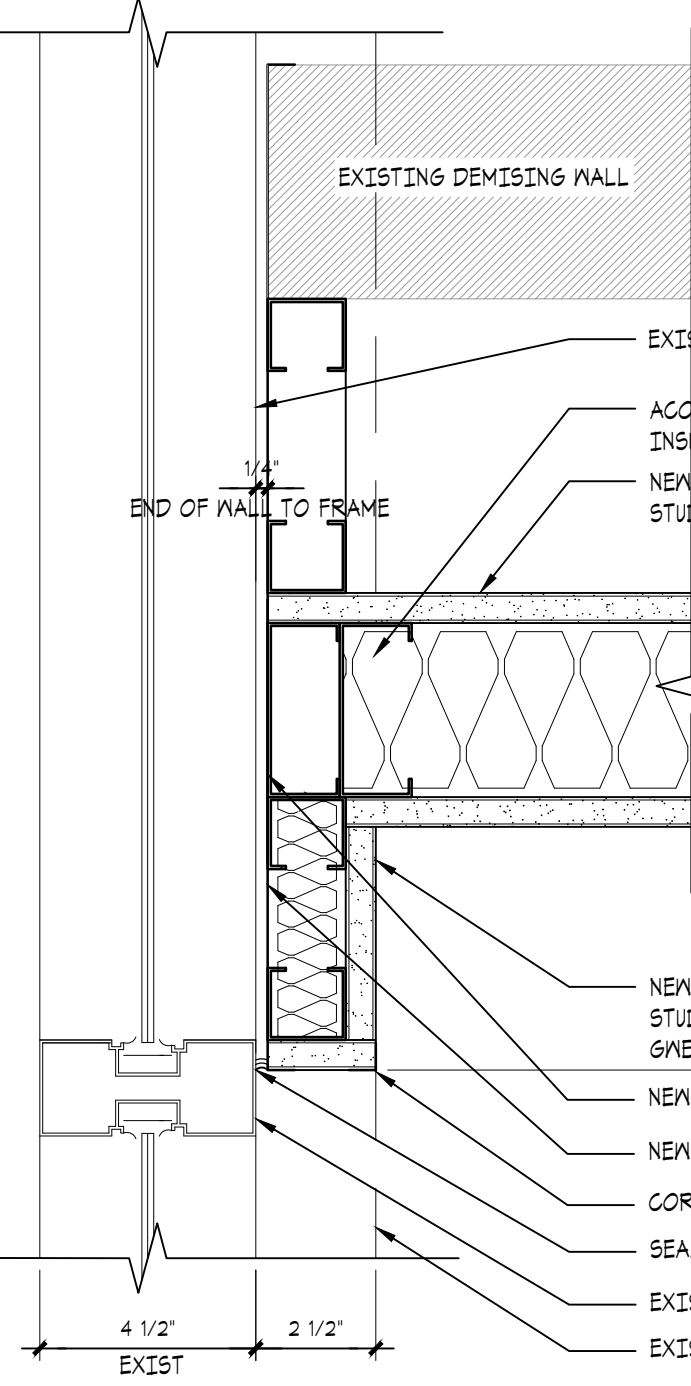
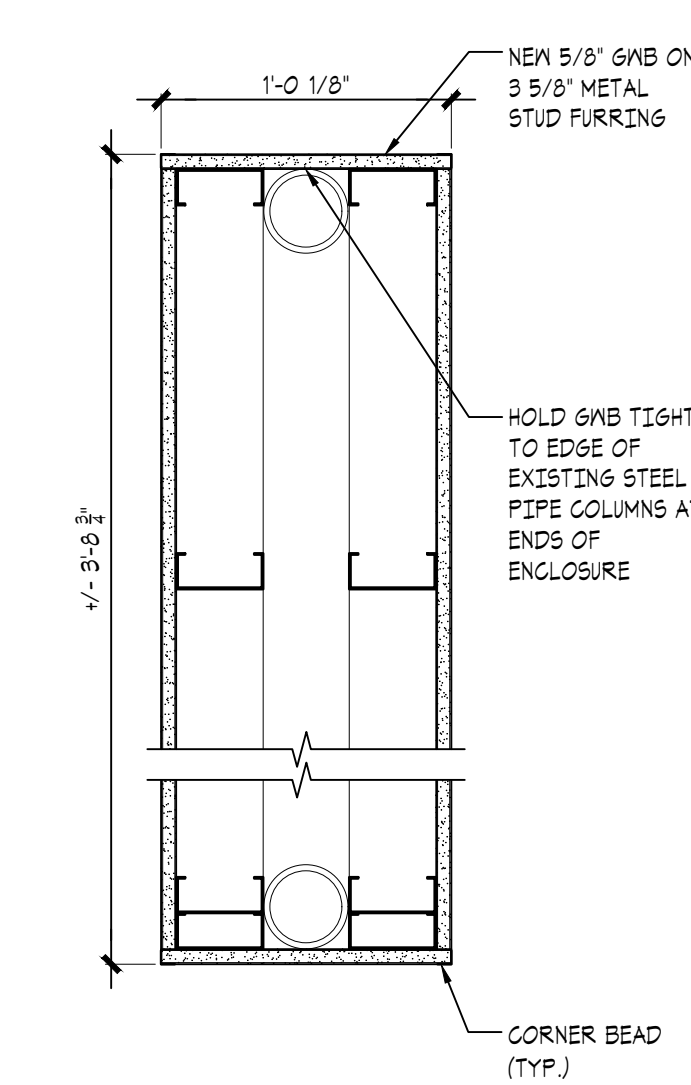
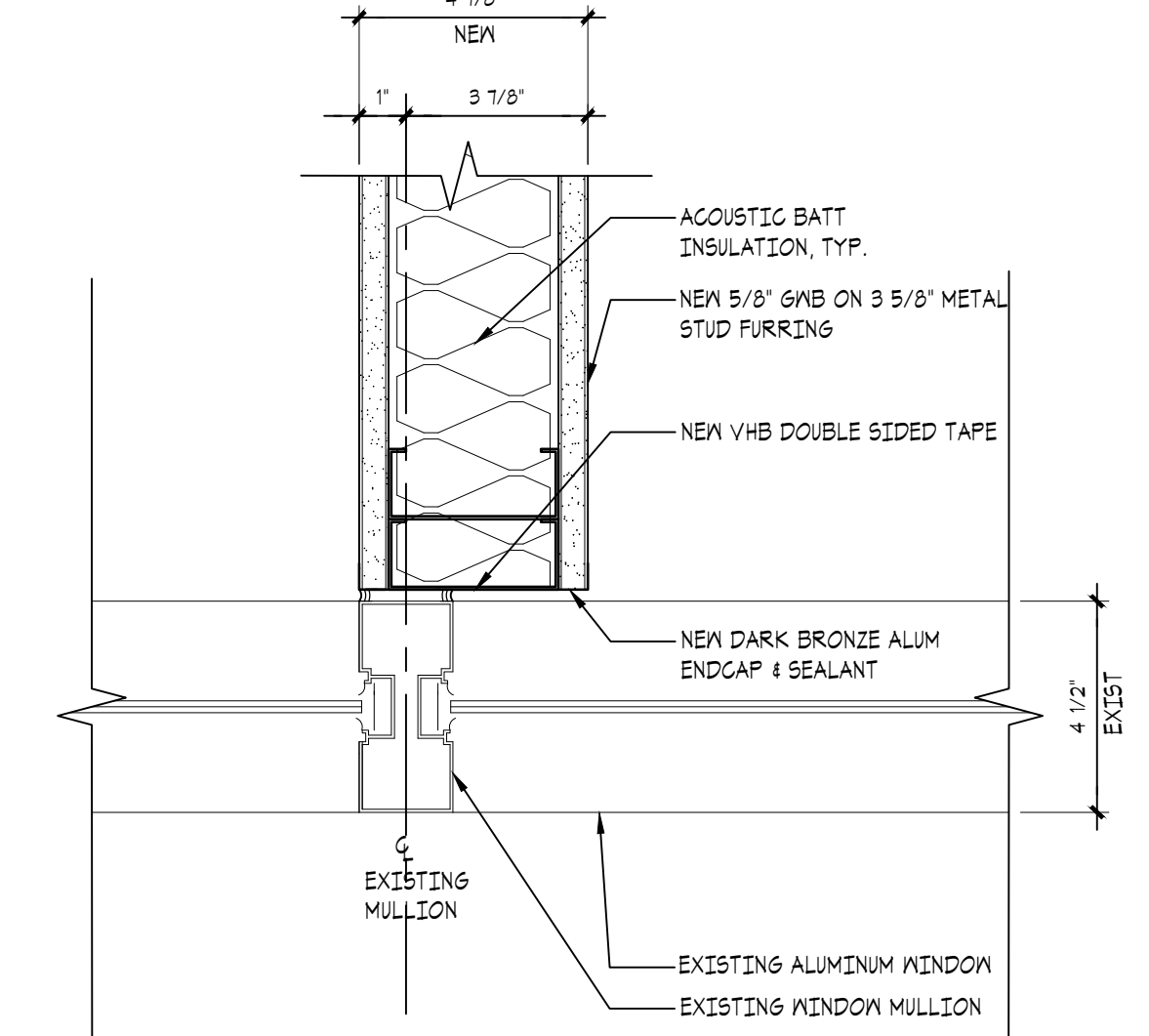
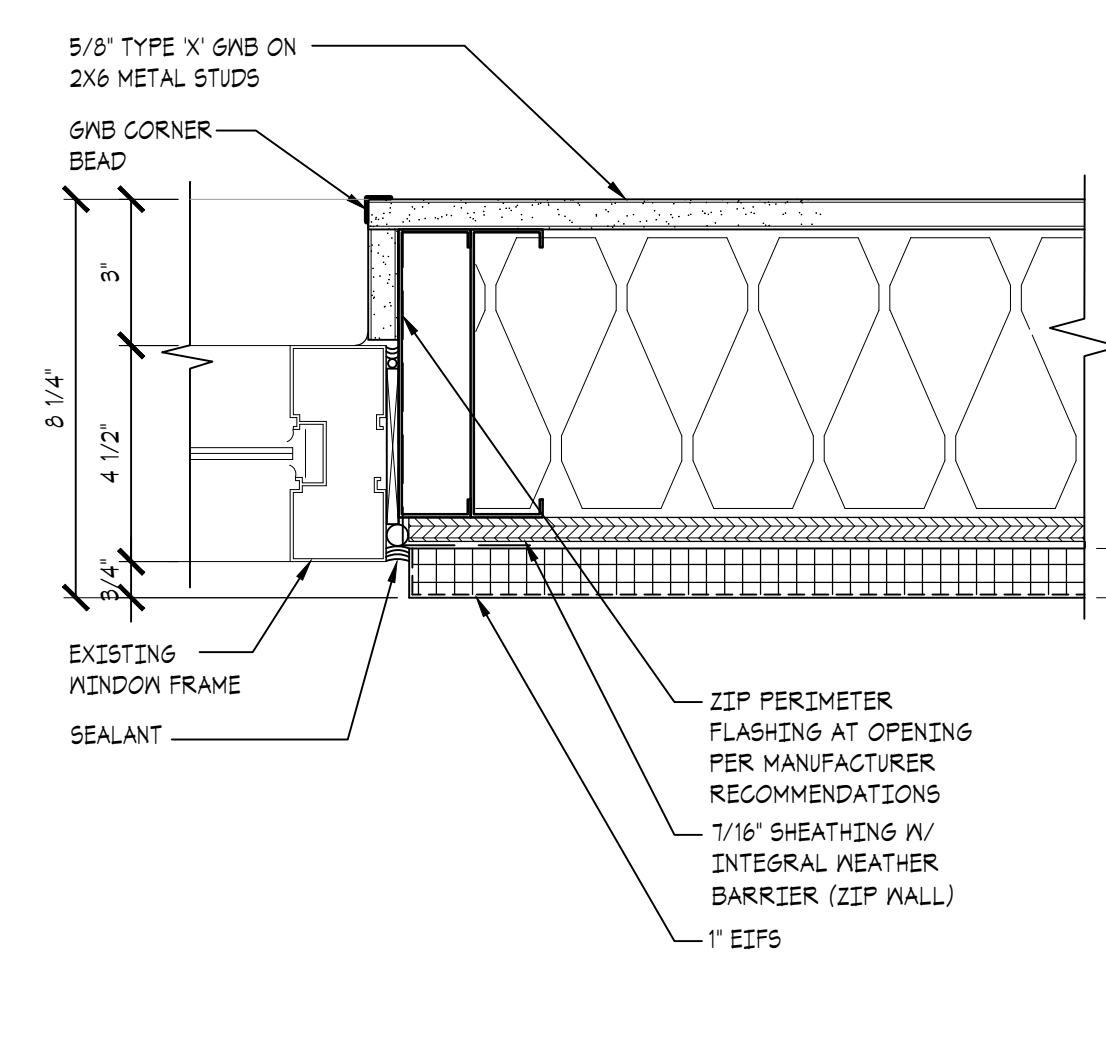
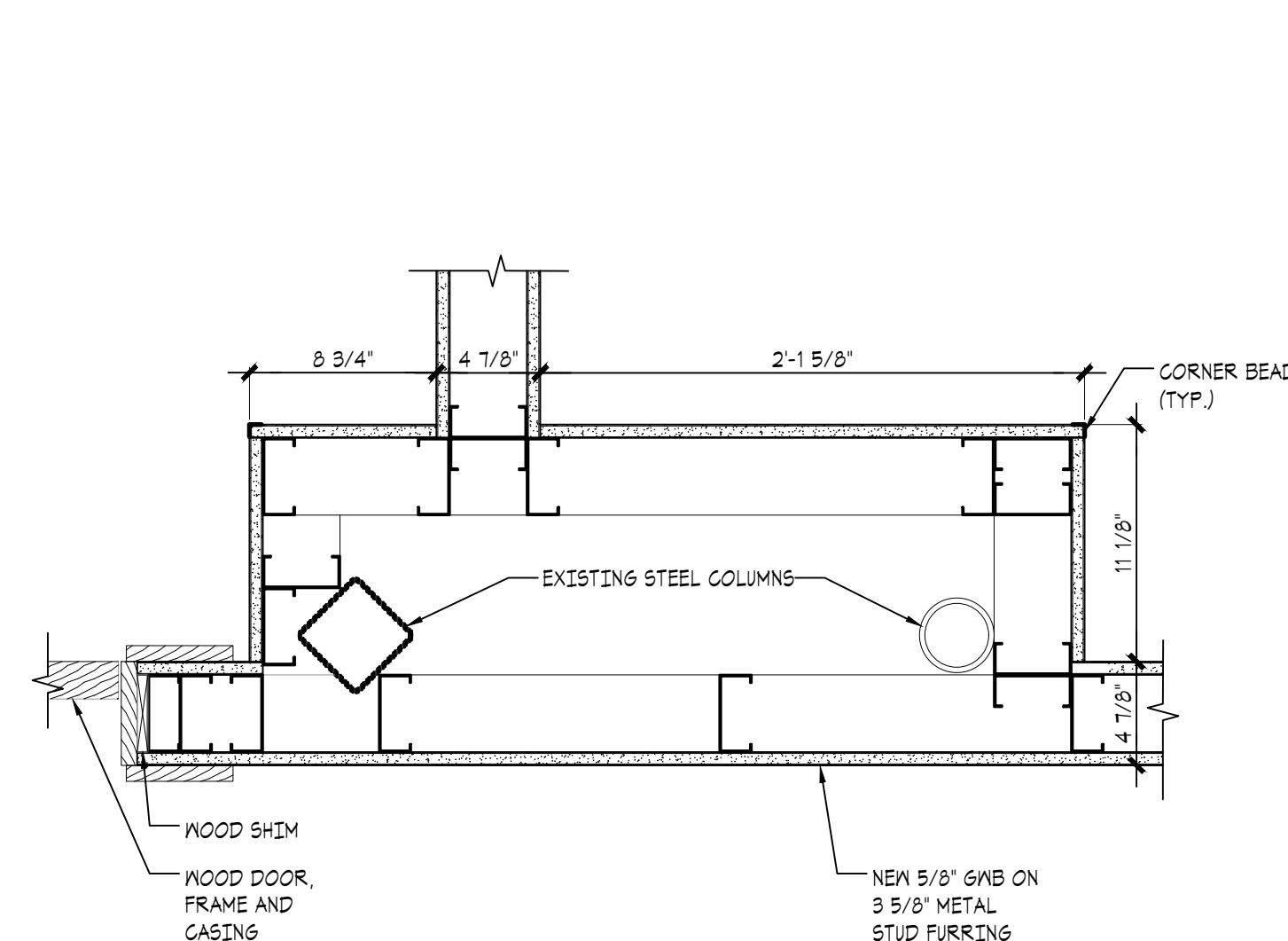
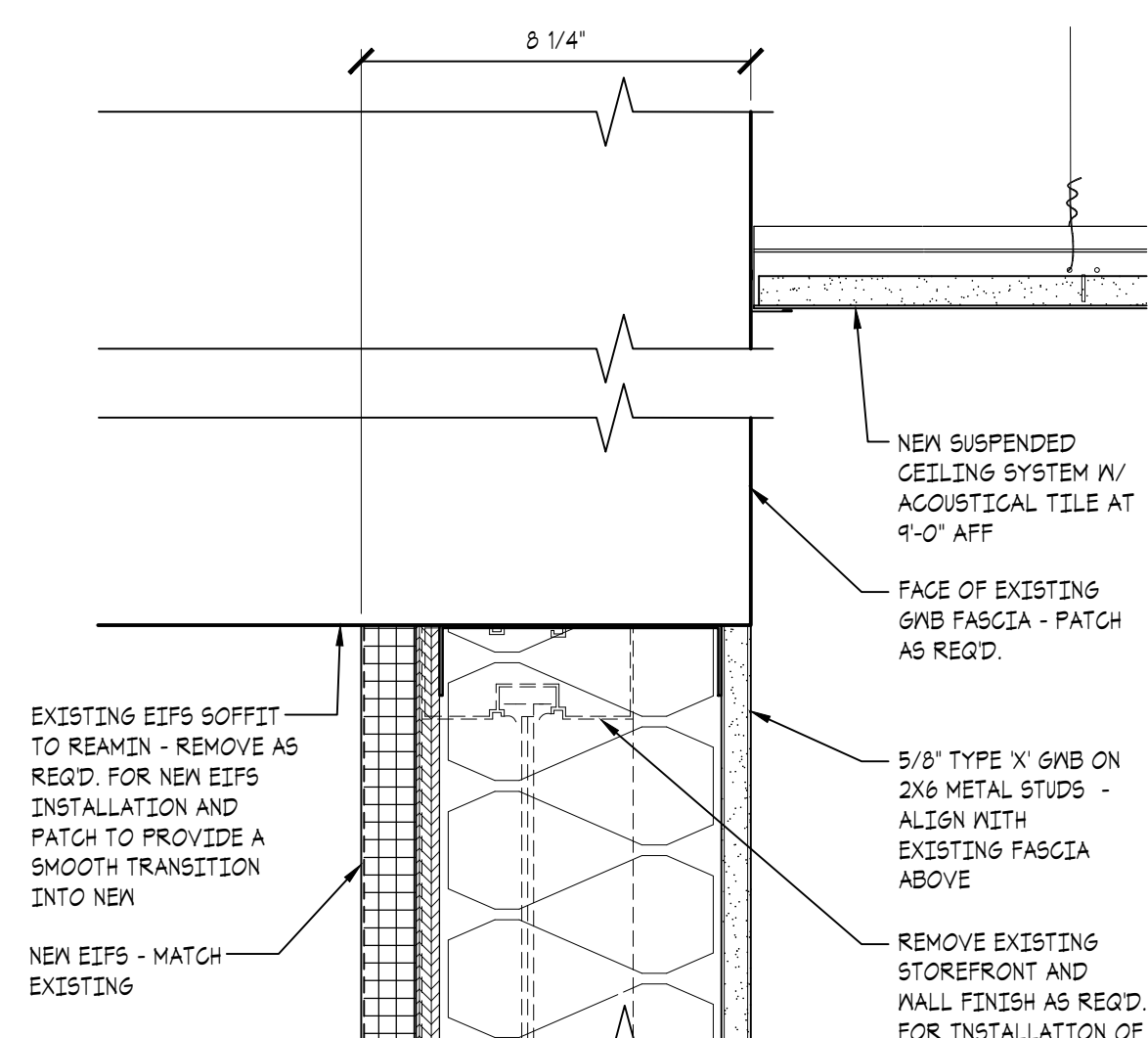
Revisions:
1 07.03.23 ADDENDUM #01

Project Number:
CM093523

Sheet Title:
FLOOR PLAN

Sheet Number:

A2.0



Seal:



Project:

Vision Bank
3600 West Main, Suite 100
Norman, Oklahoma 73072

Issue Date:
06.15.2023 - ISSUED FOR BIDDING

Revisions:
▲ **07.03.23 ADDENDUM #01**

Project Number:
CM093523

Sheet Title:
ENLARGED PLANS

Sheet Number:

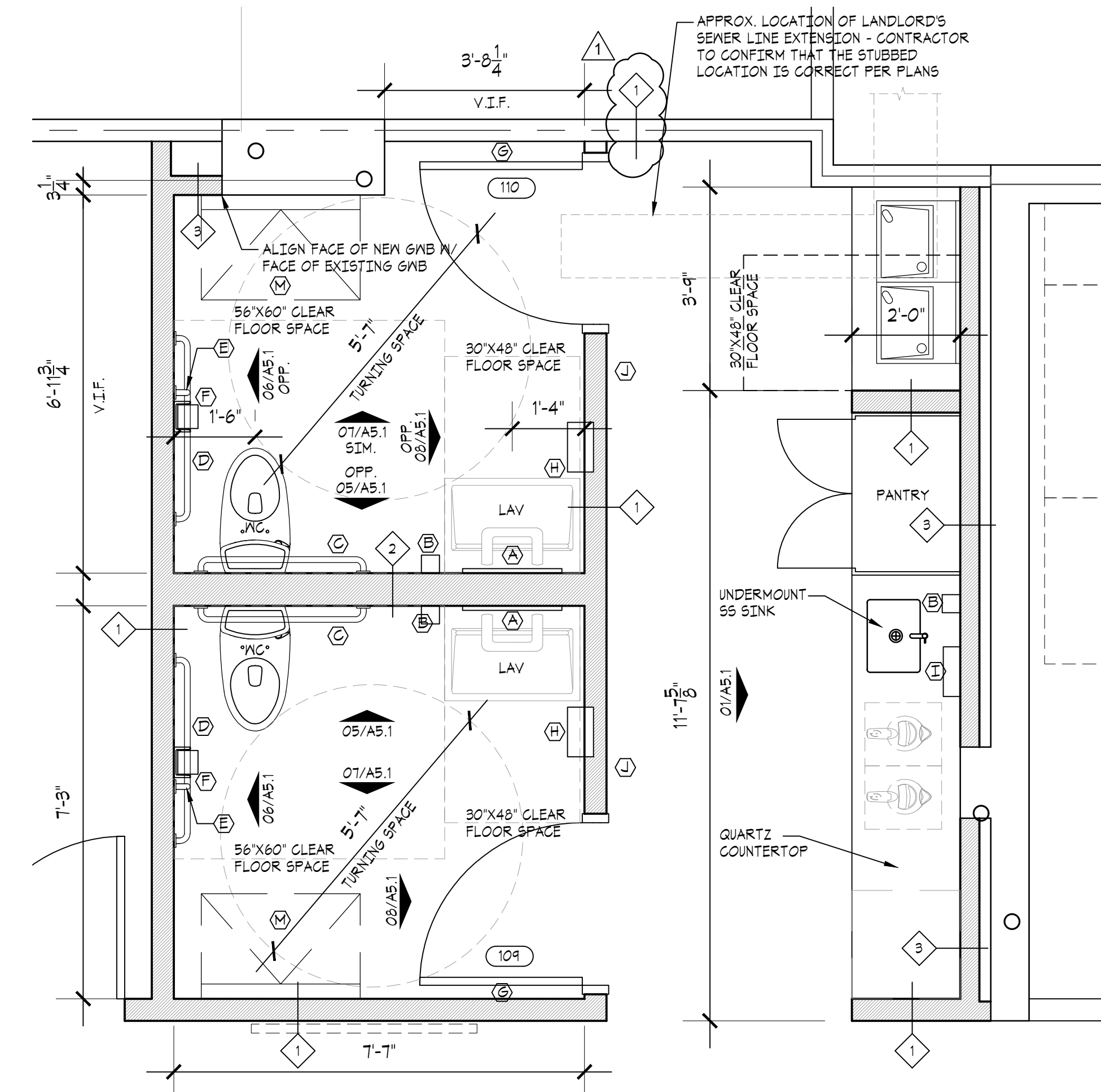
A2.1

TOILET NOTES:

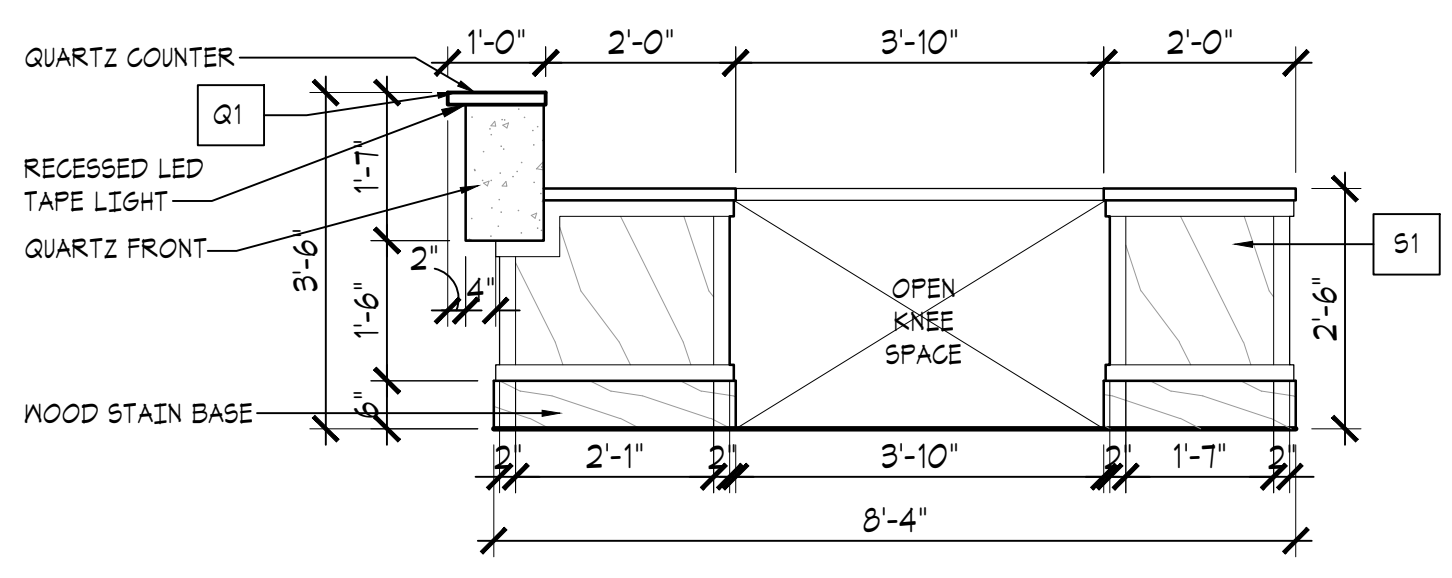
- REFER TO SHEET P1.0 FOR PLUMBING FIXTURE LEGEND.
- REFER TO ACCESSIBLE FEATURES AND ACCESSORIES MOUNTING SCHEDULE ON SHEET A2.1.
- ALL CONSTRUCTION AND MOUNTING HEIGHTS SHALL COMPLY WITH ALL APPLICABLE CITY AND STATE ACCESSIBILITY REGULATIONS AS WELL AS THE FEDERAL ADA (AMERICANS WITH DISABILITY ACT) REGULATIONS. REFER QUESTIONABLE MOUNTING HEIGHTS TO THE ARCHITECT FOR FINAL DECISION. REFER SCHEDULE THIS SHEET.
- PROVIDE SOLID CONTINUOUS FR. WOOD BLOCKING IN WALLS AS REQUIRED FOR ATTACHING ACCESSORIES, RAILS AND EQUIPMENT.
- TRASH RECEPTACLES PROVIDED BY OWNER.

TOILET ACCESSORIES:

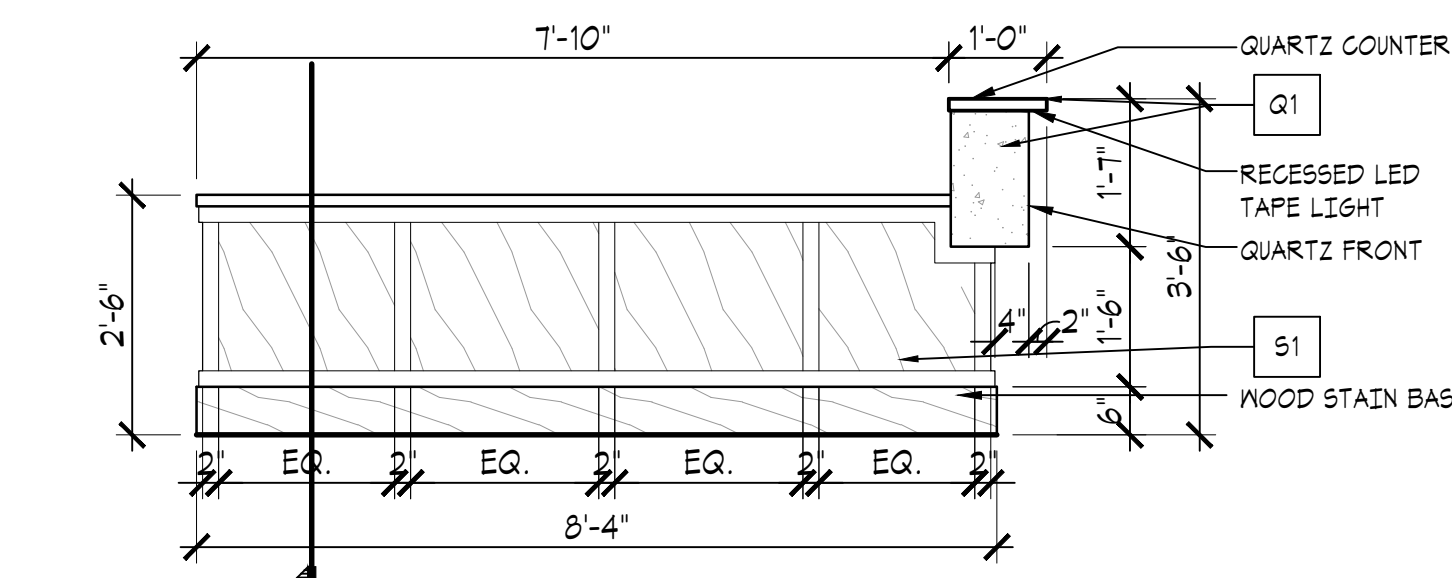
MARK	DESCRIPTION	MANUF./MODEL NO.
(A)	WOOD FRAMED MIRROR	KOHLER DAMASK FRAMED MIRROR, GLASS AND SOLID WOOD AND VENEERS, CLARET SUEDE
(B)	SOAP DISPENSER	BOBRICK B2012, AUTOMATIC WALL MOUNTED SOAP DISPENSER
(C)	36" GRAB BARS AT 36" AFF	BOBRICK, B-5506 X 36
(D)	42" GRAB BARS AT 36" AFF	BOBRICK, B-5506 X 42
(E)	18" VERTICAL GRAB BARS AT 40" AFF	BOBRICK, B-5506 X 18
(F)	TOILET PAPER DISPENSER	BOBRICK B-4288 S
(G)	COAT HOOK	BOBRICK, B-662
(H)	PAPER TOWEL DISPENSER / TRASH CAN (RECESSED)	BOBRICK B-3440 RECESSED CONVERTIBLE PAPER TOWEL DISPENSER/WASTE RECEPTACLE
(I)	PAPER TOWEL DISPENSER / TRASH CAN (WALL MOUNT, RECESSED)	BOBRICK B-262, CLASSIC SERIES, SURFACE MOUNT, 22 GA STAINLESS STEEL, SATIN FINISH, HEMMED OPENING
(J)	ACCESSIBLE TOILET SIGNAGE	COMPLY W/ 2010 ADA STANDARDS
(K)	NOT USED	
(L)	NOT USED	
(M)	BABY CHANGING STATION	KOALA KARE, MODEL#KB200, GREY



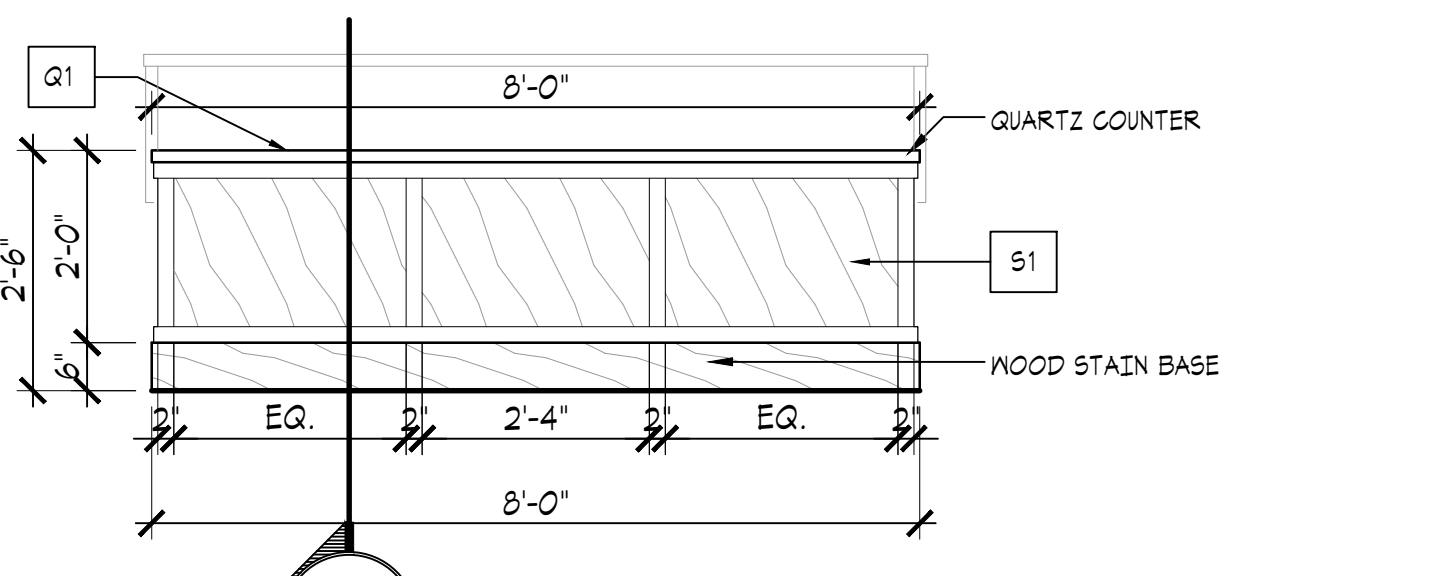
01 FLOOR PLAN
SCALE: 1/2" = 1'-0"



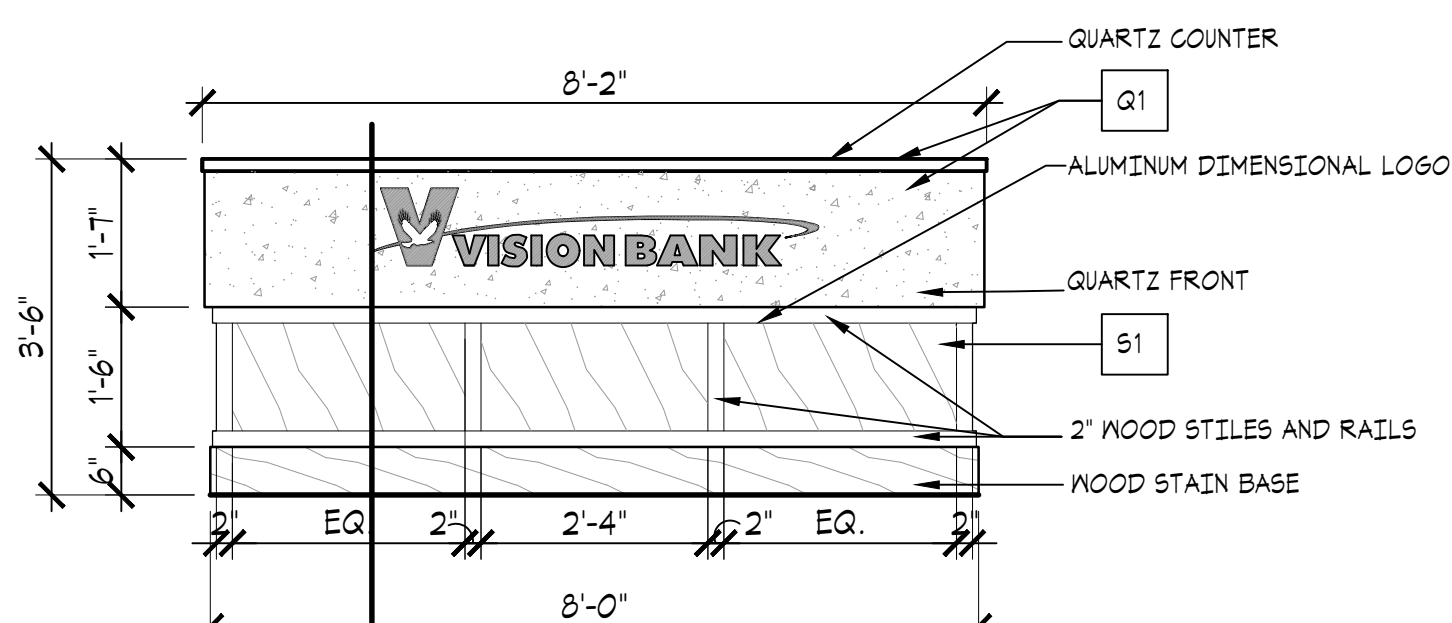
13 RECEPTION DESK
SCALE: 1/2" = 1'-0"



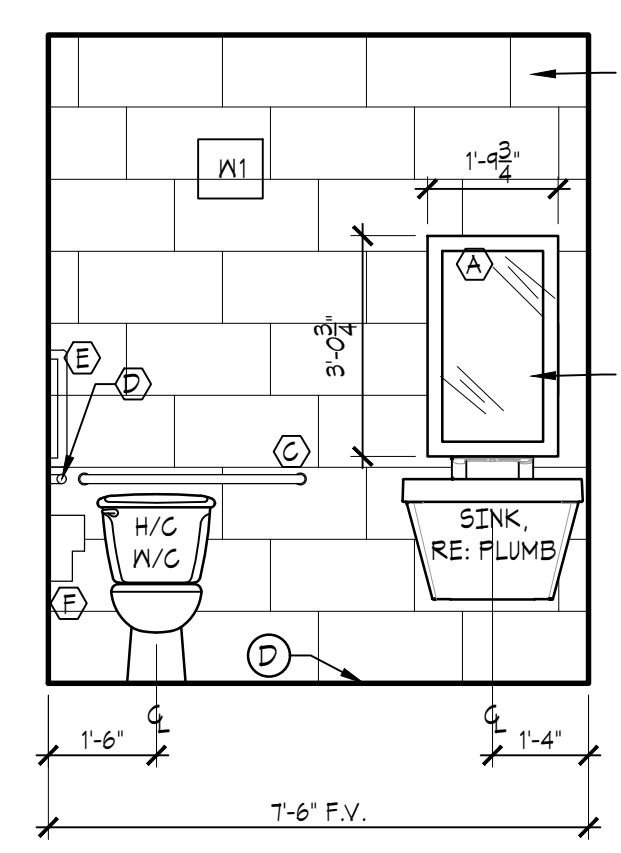
12 RECEPTION DESK
SCALE: 1/2" = 1'-0"



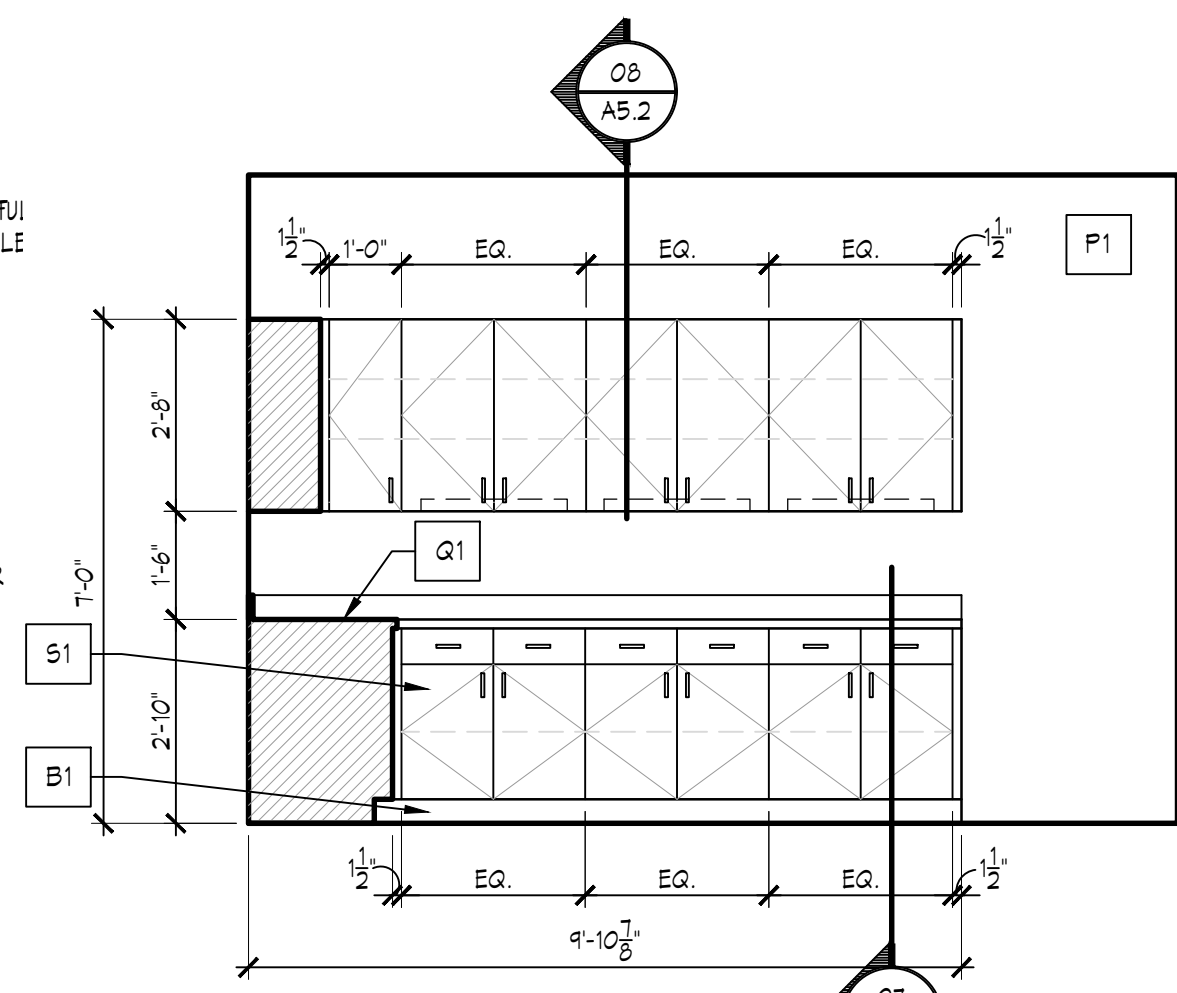
11 RECEPTION DESK
SCALE: 1/2" = 1'-0"



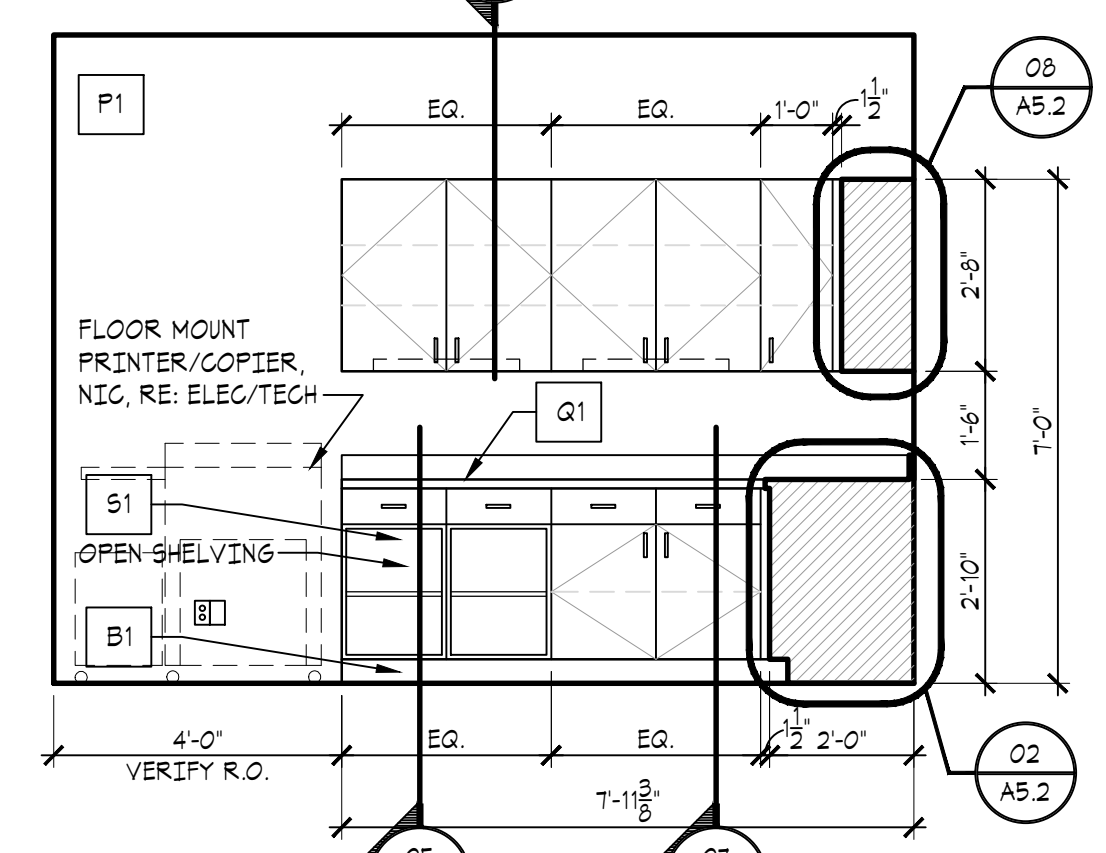
10 RECEPTION DESK
SCALE: 1/2" = 1'-0"



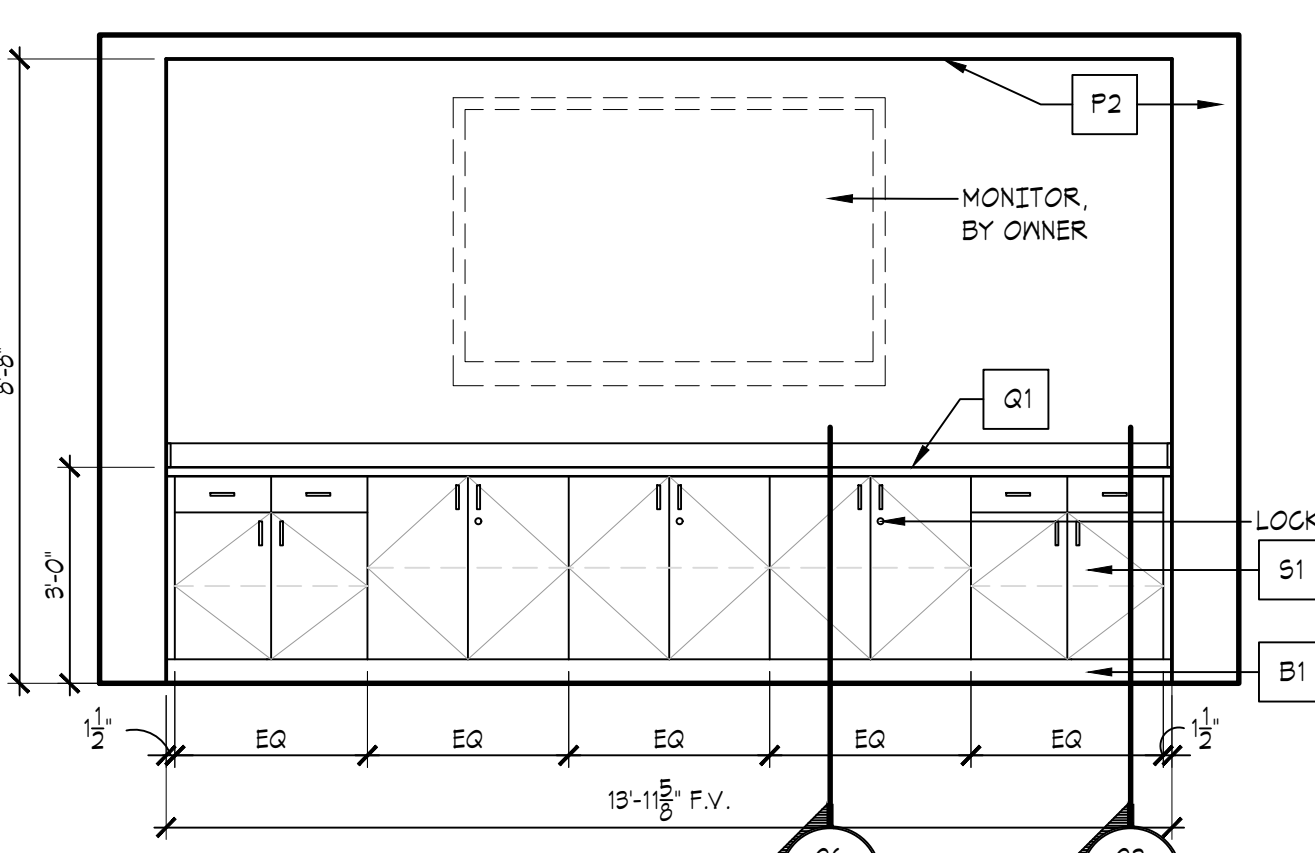
05 RESTROOM
SCALE: 3/8" = 1'-0"



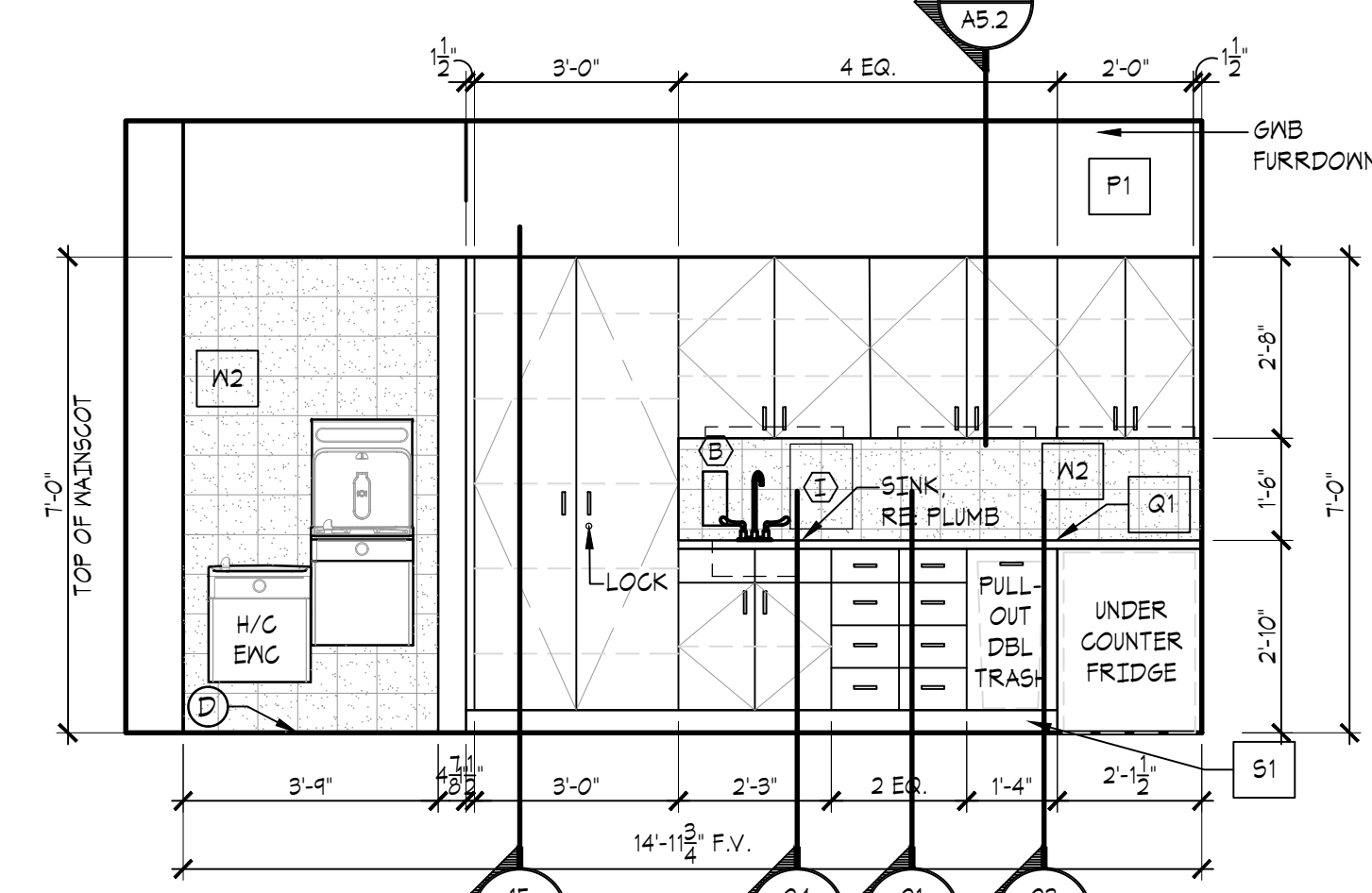
04 WORKROOM 121
SCALE: 3/8" = 1'-0"



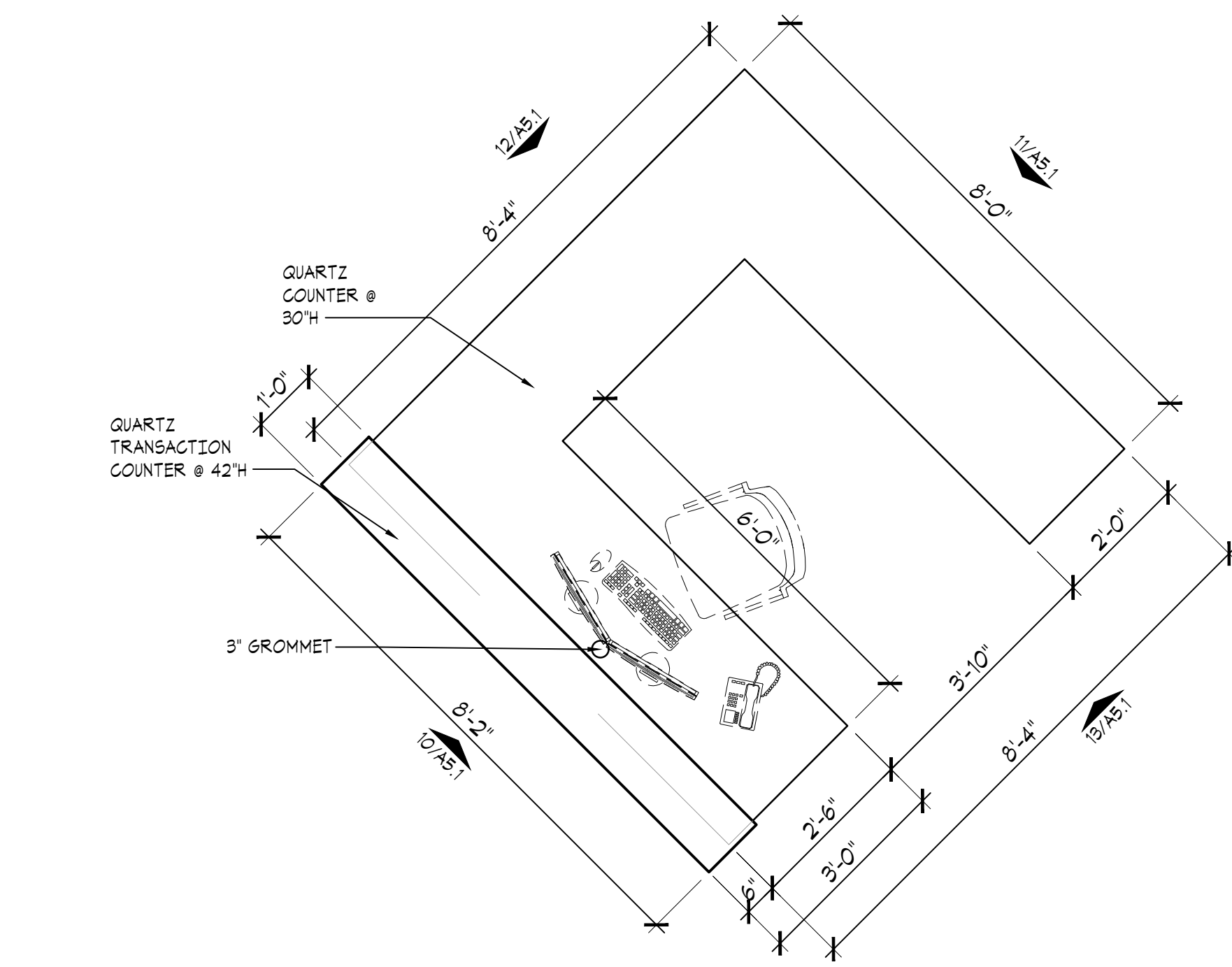
03 WORKROOM 121
SCALE: 3/8" = 1'-0"



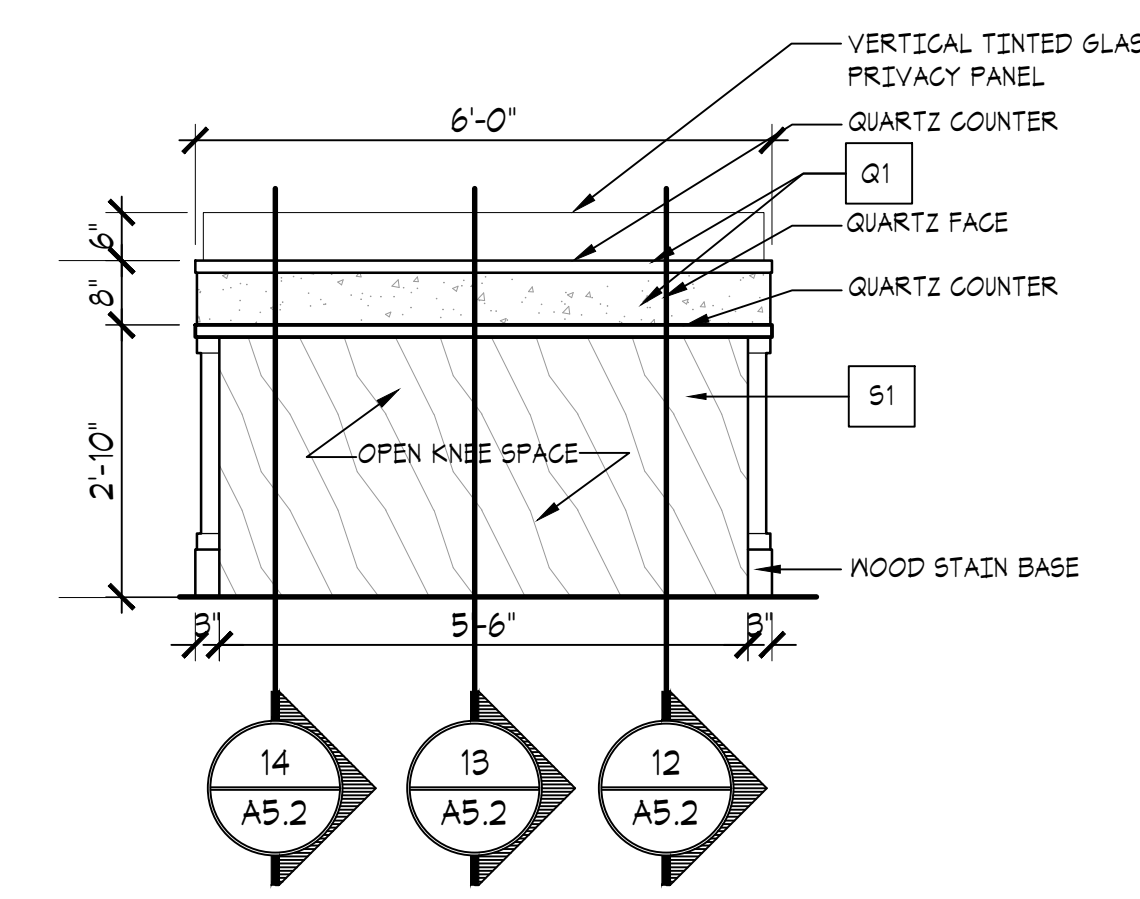
02 CONFERENCE 108
SCALE: 3/8" = 1'-0"



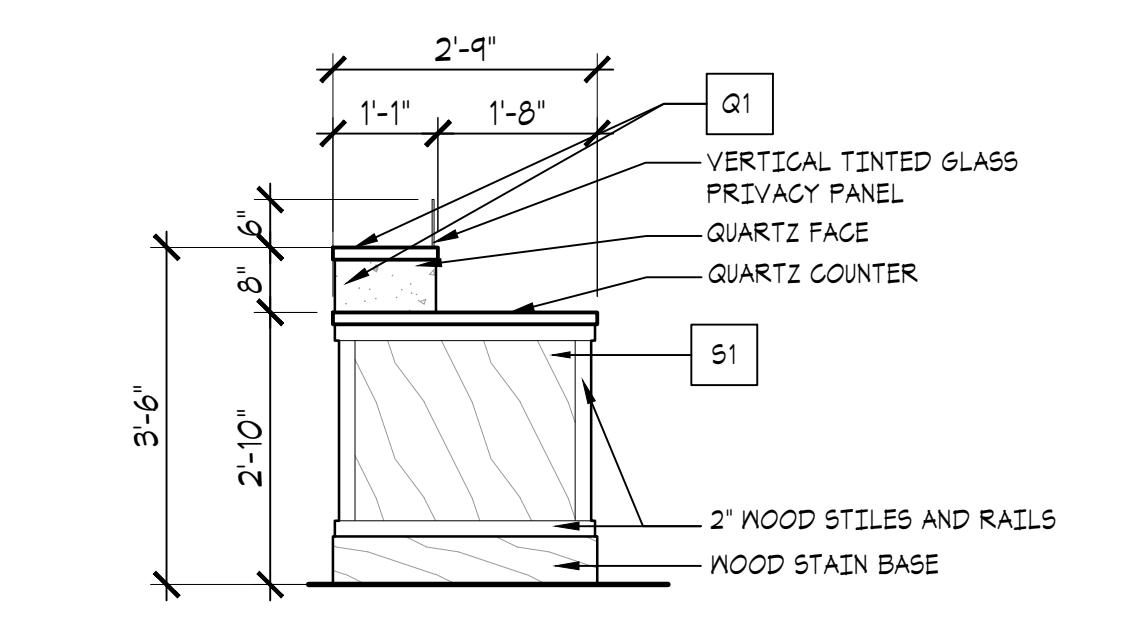
01 COFFEE
SCALE: 3/8" = 1'-0"



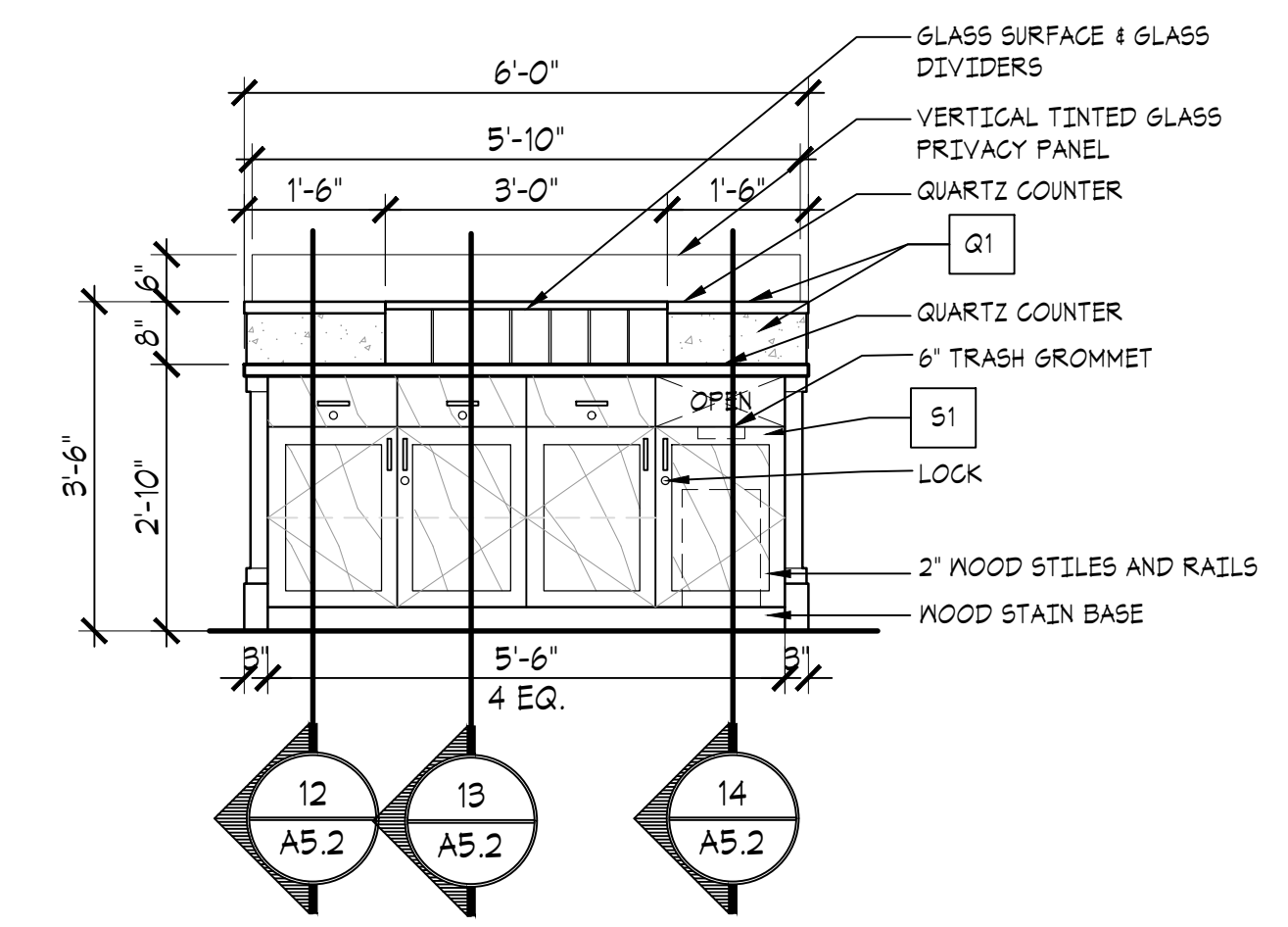
18 PLAN @ RECEPTION DESK
SCALE: 1/2" = 1'-0"



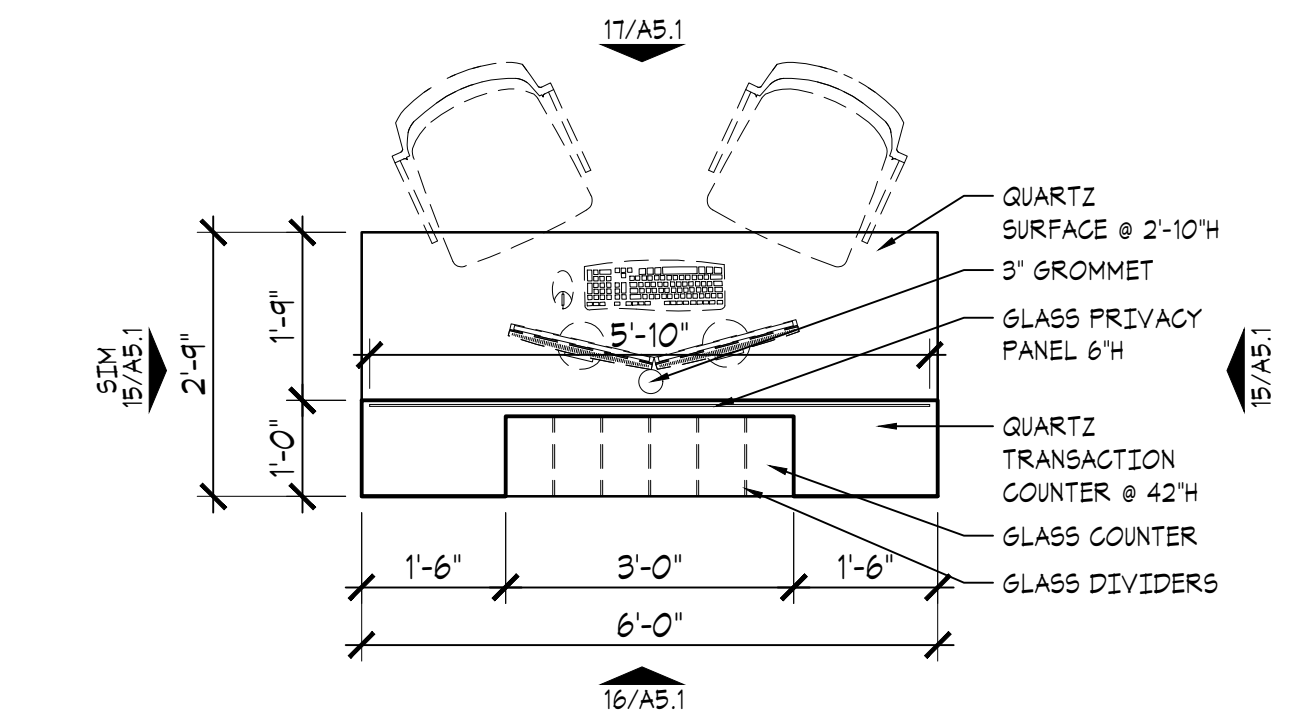
17 CHECK STATION
SCALE: 1/2" = 1'-0"



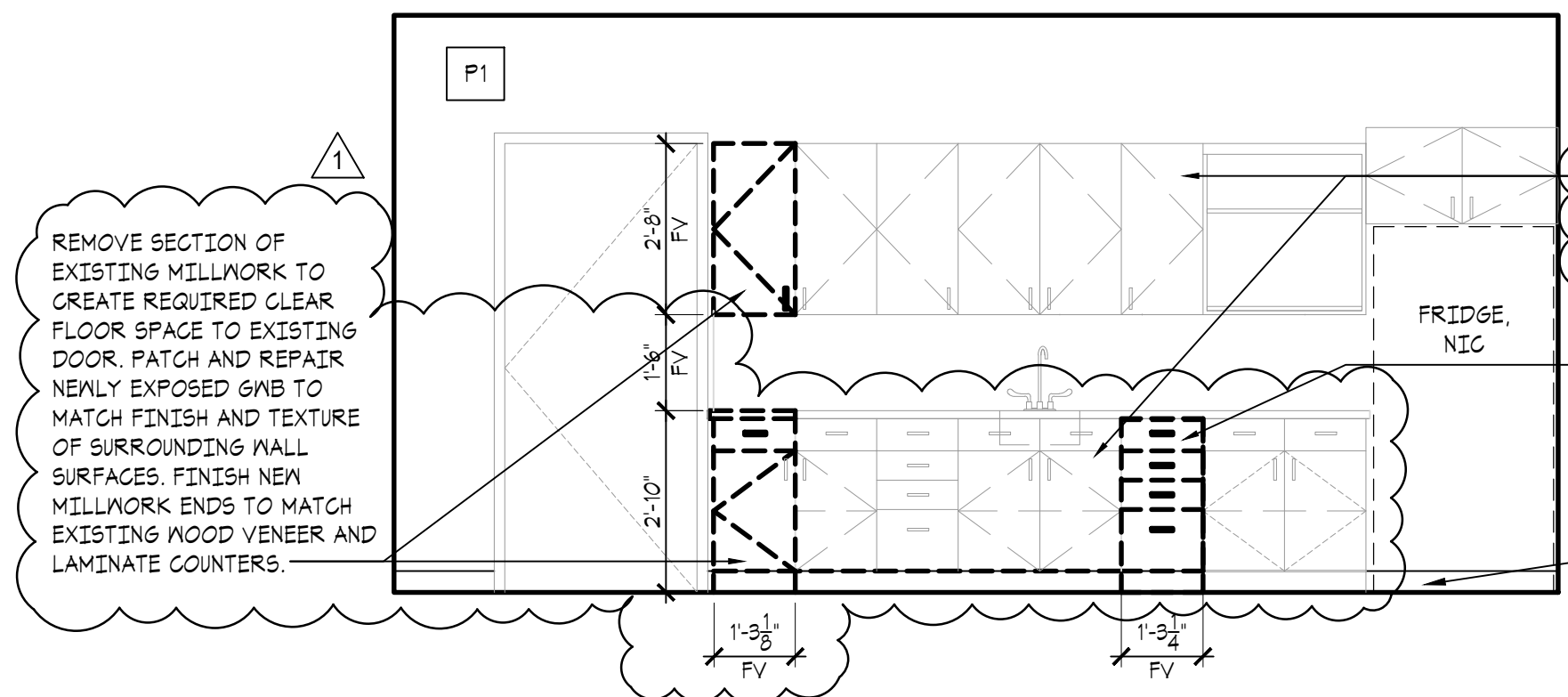
15 CHECK STATION
SCALE: 1/2" = 1'-0"



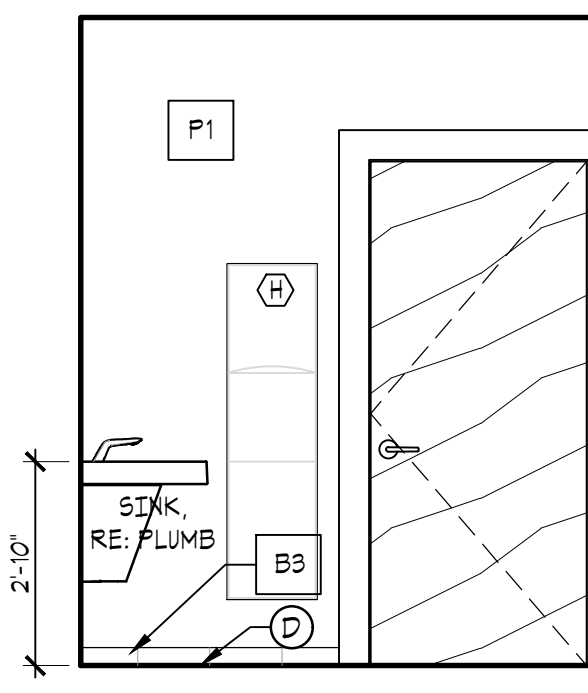
16 CHECK STATION
SCALE: 1/2" = 1'-0"



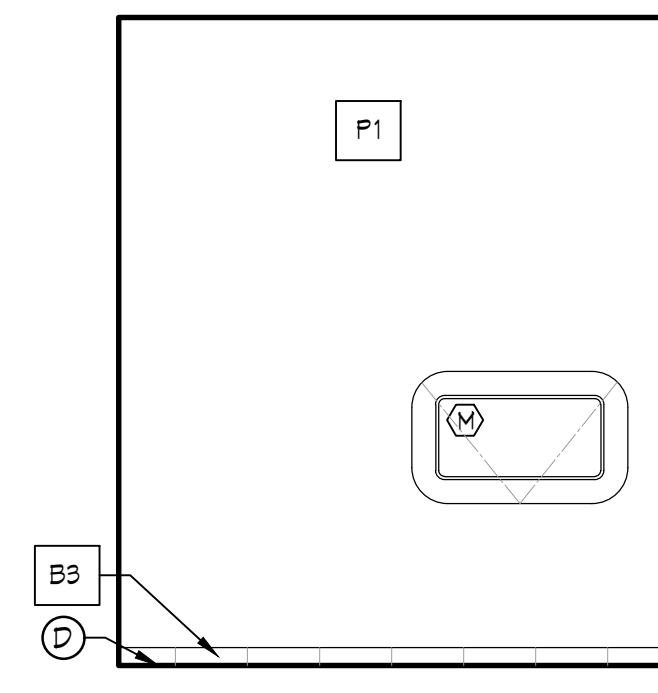
14 PLAN @ CHECK STATION
SCALE: 1/2" = 1'-0"



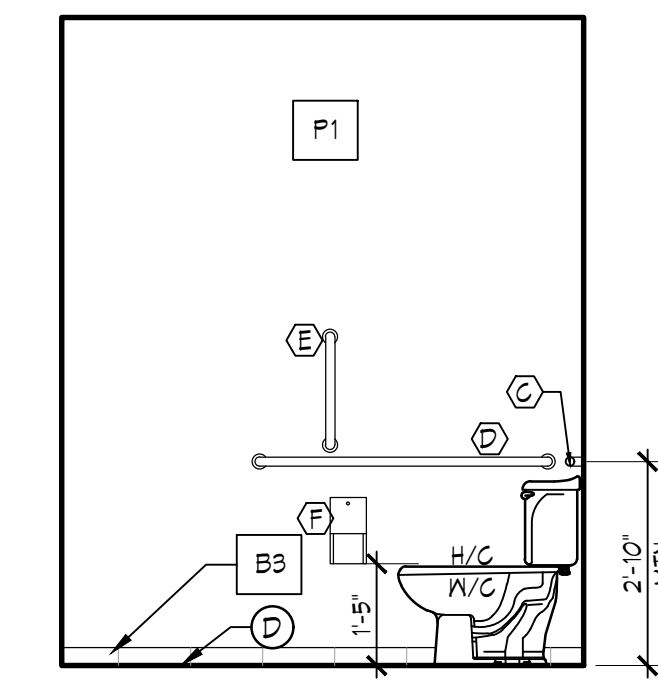
09 BREAK ROOM
SCALE: 3/8" = 1'-0"



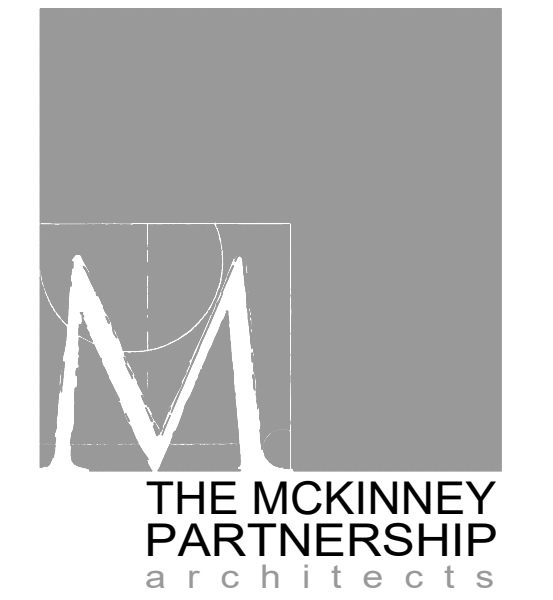
08 RESTROOM
SCALE: 3/8" = 1'-0"



07 RESTROOM
SCALE: 3/8" = 1'-0"



06 RESTROOM
SCALE: 3/8" = 1'-0"



THE MCKINNEY
PARTNERSHIP
architects



Project:
Vision Bank
3600 West Main, Suite 100
Norman, Oklahoma 73072

Issue Date:
06.15.2023 - ISSUED FOR BIDDING

Revisions:
07.03.23 ADDENDUM #01

Project Number:
CM093523

Sheet Title:
INTERIOR ELEVATIONS

Sheet Number:

A5.1